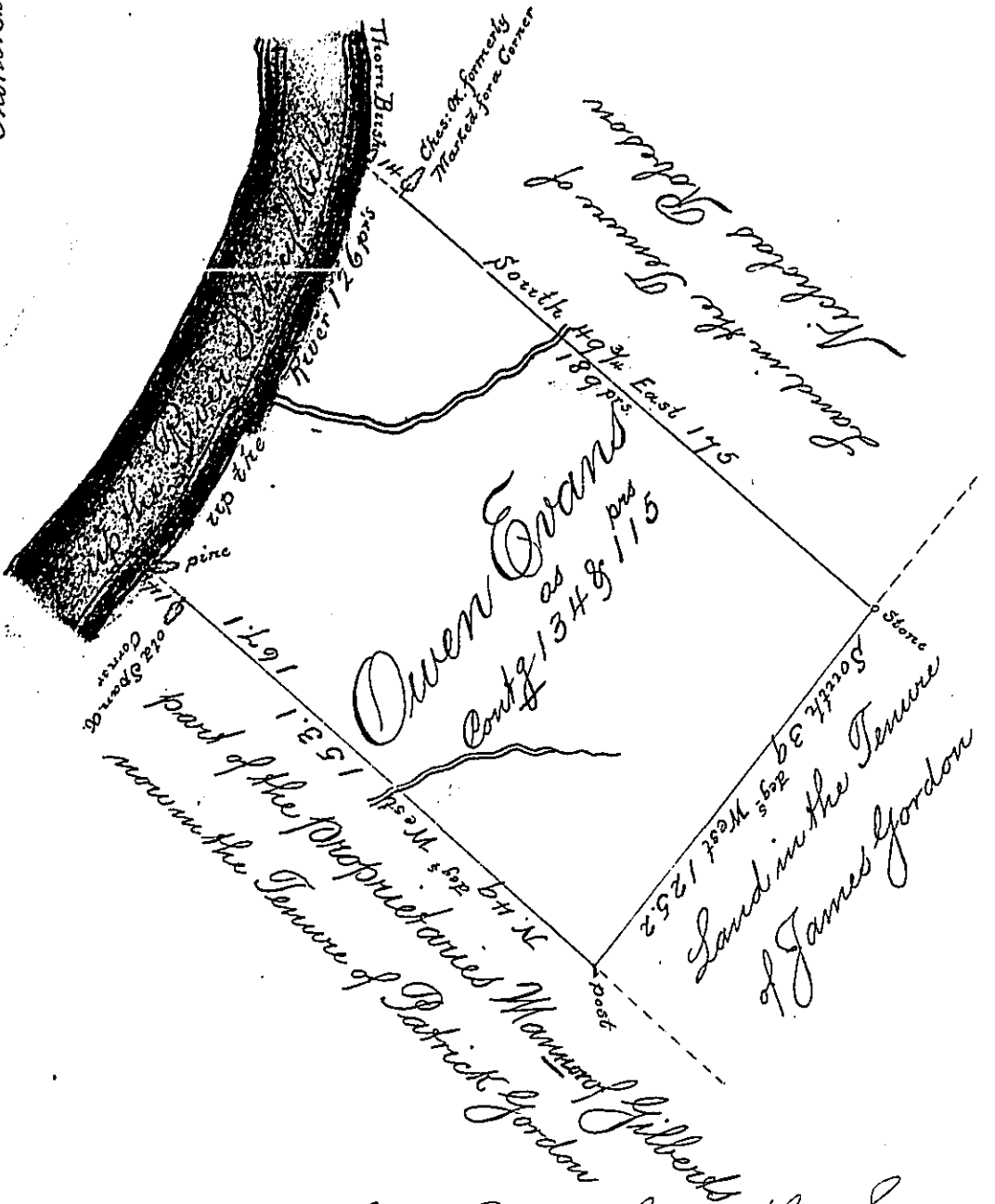


N.B. the lines were formerly run as follows towards Schuylkill  
 Hill from the Blount and S. Sparrow's Chest Corners which stand upon a  
 high rocky Hill from whence I marked new lines 14 perches down  
 to the River and the Hill so steep as to form with the horizontal an  
 angle of near thirty degrees  
 the Courses up Schuylkill River are  
 N. 40 E. 21  
 N. 30 E. 54  
 N. 24 E. 36  
 N. 20 E. 15 to the  
 Stone Bush



In pursuance of an Order from the Surveyor General dated the 4th Day of May Anno Domini 1768 I have on the 24th day of the same Month resurveyed for Owen Evans the above described Tract of Land being part of the Proprietaries Manner of Gilberts Containing One Hundred and Thirty four acres and one hundred and fifteen perches without any allowances

Benj<sup>a</sup> Jacobs

IN TESTIMONY that the above is a copy of the original remaining on file in the Department of Internal Affairs of Pennsylvania, made conformably to an Act of Assembly approved the 16th day of February, 1833, I have hereunto set my Hand and caused the Seal of said Department to be affixed at Harrisburg, this third day of September 1901.

James W. Latta  
 Secretary of Internal Affairs.